

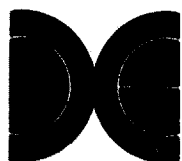
SERVICE & INSTALLATION MANUAL

437

PART NUMBER : 780-0084-00

TIGILLANTE

UPRIGHT MODEL



DATA EAST USA, INC.

470 NEEDLES DRIVE
SAN JOSE, CA 95112
TELEPHONE: (408) 286-7074

FCC WARNING

This equipment generates and uses radio frequency energy and if not installed and used properly, ie; in strict accordance with this instructions manual, may cause harmful interference to radio communications. This equipment has been tested and found to comply with the limits for a Class A computing device pursuant to Subpart J of Part 15 of the FCC rules, which are designed to provide reasonable protection against such interference when the equipment is operated in a commercial environment.

Operation of this equipment in a residential environment is likely to cause interference in which case the user, at his own expense, will be required to take whatever measures are necessary to correct the interference.

FBI WARNING

Federal law provides severe civil and criminal penalties for the unauthorized reproduction, distribution, or exhibition of copyrighted audio-visual works and video games. The Federal Bureau of Investigation investigates allegations of criminal copyright infringement.

COPYRIGHT NOTICE

Vigilante™ is Copyright 1987 Irem Corporation, licensed and sold exclusively in the United States of America and Canada by Data East USA, Inc. All rights reserved.

ENVIRONMENTAL DATA

This product is intended for indoor use only, power requirements are 105-125 volts AC, 50-60 hz, and requires a 3 wire grounded outlet.

SERVICE PROCEDURES

To obtain replacement parts and technical service, contact the authorized Data East Distributor in your area. If you require referral or further technical assistance, you may contact Data East's Customer Service department during the hours of 8:00 am to 5:00 pm Pacific Time at (408) 286-7074.



UPRIGHT MODEL
SERVICE & OPERATION MANUAL
TABLE OF CONTENTS

1. GENERAL INFORMATION	
A. Installation and Set-Up.....	1
2. GAME INFORMATION	
A. Game Options.....	2
B. Power-Up Self-Test.....	3
C. System Adjustments.....	4
D. Main Harness Diagram.....	5
3. REPLACEMENT PARTS LIST.....	6
4. PCB SCHEMATIC DIAGRAMS.....	7

© 1987 DATA EAST USA, INC.
470 NEEDLES DRIVE
SAN JOSE, CA. 95112
(408) 286-7074

FIRST PRINTING
JANUARY 1988

PN: 780-0084-00

1. GENERAL INFORMATION

A. Installation and Set-Up.

NOTE: There are two models of the Vigilante™ upright video game. The first release version had a detachable control panel box and can be identified by a curved Marquee Plex. The second release utilizes a conventional cabinet that has the control panel mounted to the cabinet. If you have a second release game, skip to step 4 below.

1. Remove the shipping screws to remove the Rear Access Door using the key supplied. The 2 bolts used to hold the Control Panel to the rear access door during shipment are also used to mount the control panel to the cabinet. The two remaining bolts required can be found threaded into T-nuts in the control panel. Remove the Control Panel from the back door at this time.
2. Locate the keys in the package on the front of the cabinet, open the Coin Door. The control panel has two (2) retaining clamps that hold down the hinged section of the panel. Release the clamps at this time. Position the control panel on the front of the cabinet. Raise up the hinged section of the panel and reach inside the cabinet to start threading in the four mounting bolts. Thread in the bolts until they are finger tight. Using a ratchet with a 7/16" socket, tighten the mounting bolts. These may be easier to reach from the rear of the cabinet.
3. Plug the 12 pin Molex connector from the control panel into the Main Harness. Close the Control Panel and secure with the clamps.
4. Check the Main Harness for loose or unplugged connectors, and check for secure mounting of the monitor, power supply, and game pcb. Stabilize the cabinet using the leg levelers in the floor of the cabinet to prevent the game from rocking.
5. The selectable options have been pre-set at the factory for optimum player appeal, however, refer to Chapter 2, Section A; Dip Switch Options in this manual to set the game up for special requirements.
6. Remove the power cord from the inside of the cabinet and insert the strain relief plate into the slot at the bottom of the rear access door opening. Plug the AC cord into a grounded 117 VAC outlet and flip the power switch to the ON position. Allow 2 to 3 minutes for the monitor to warm up and check for proper demonstration mode video on the screen. Insert the proper coinage into a coin slot and start a game. Check for proper operation of all joystick controls and switches.

2. GAME INFORMATION

A. Game Options.

The game options can be changed via 2 banks of dip-switches on the game PCB set. Be certain to remove power to the game when changing settings.

DIP SWITCH 1:

ITEM	ACTION	1	2	3	4	5	6	7	8
NUMBER OF FIGHTERS	THREE (3):	OFF	OFF						
	TWO (2):	ON	OFF						
	FOUR (4):	OFF	ON						
	FIVE (5):	ON	ON						
DIFFICULTY	NORMAL:			OFF					
	HARD:			ON					
DECREASE OF ENERGY	NORMAL:				OFF				
	FAST:				ON				
COIN MODE 2	1 COIN = 1 CREDIT:					OFF	OFF		
	2 COIN = 1 CREDIT:					ON	OFF		
	3 COIN = 1 CREDIT:					OFF	ON		
	5 COIN = 1 CREDIT:					ON	ON		
	1 COIN = 2 CREDIT:							OFF	OFF
	1 COIN = 3 CREDIT:							ON	OFF
	1 COIN = 5 CREDIT:							OFF	ON
	1 COIN = 6 CREDIT:							ON	ON
COIN MODE 1	1 COIN = 1 CREDIT:					OFF	OFF	OFF	OFF
	2 COIN = 1 CREDIT:					ON	OFF	OFF	OFF
	3 COIN = 1 CREDIT:					OFF	ON	OFF	OFF
	4 COIN = 1 CREDIT:					ON	ON	OFF	OFF
	5 COIN = 1 CREDIT:					OFF	OFF	ON	OFF
	6 COIN = 1 CREDIT:					ON	OFF	ON	OFF
	1 COIN = 2 CREDIT:					OFF	ON	ON	OFF
	1 COIN = 3 CREDIT:					ON	ON	ON	OFF
	1 COIN = 4 CREDIT:					OFF	OFF	OFF	ON
	1 COIN = 5 CREDIT:					ON	OFF	OFF	ON
	1 COIN = 6 CREDIT:					OFF	ON	OFF	ON
	2 COIN = 3 CREDIT:					ON	ON	OFF	ON
	3 COIN = 2 CREDIT:					OFF	OFF	ON	ON
	5 COIN = 3 CREDIT:					ON	OFF	ON	ON
	8 COIN = 3 CREDIT:					OFF	ON	ON	ON
	FREE PLAY:					ON	ON	ON	ON

DIP SWITCH 2:

ITEM	ACTION	1	2	3	4	5	6	7	8
FLIP PICTURE	NO: YES:	OFF ON							
CABINET TYPE	TABLE: UPRIGHT:		OFF ON						
COIN MODE	MODE 1: MODE 2:			OFF ON					
SOUND IN DEMO MODE	YES: NO:				OFF ON				
BUY-IN MODE	YES: NO:					OFF ON			
DEMO FREEZE MODE	NO:						OFF		
2P=STOP 1P=CONTINUE	YES:						ON		
NO DEATH MODE	NO: YES:							OFF ON	
ALWAYS KEEP SWITCH 8 OFF									OFF

NOTE: For Coin 1 and Coin 2 = same value, use COIN MODE 1. For Coin 1 and Coin 2 = different value, use COIN MODE 2.

B. Power-Up Self Test.

When power is turned on, the following test is conducted automatically:

1. RAM TEST ;tests system RAMs for read and write capability.
2. ROM TEST ;tests system ROMs for valid data.

The RAM test causes various video patterns to appear on the screen for several seconds, and then displays results of RAM and ROM test.

If a RAM fails the test, the screen will display an error message indicating the defective device.

If a ROM fails the test, the screen will display an error message indicating the defective device.

C. System Adjustments.

The Volume Control, Coin Counter, and Service Switch are located on the Service Panel. The Service Panel is located inside the Coin Door, mounted on the wall of the cabinet on the left side.

The Coin Counter increments once for every coin dropped through either coin entry slots.

The Volume Control is used to adjust the overall loudness of the game sounds. NOTE: The volume control potentiometer on the Main pcb is pre-set to mid-range at the factory and should not be adjusted.

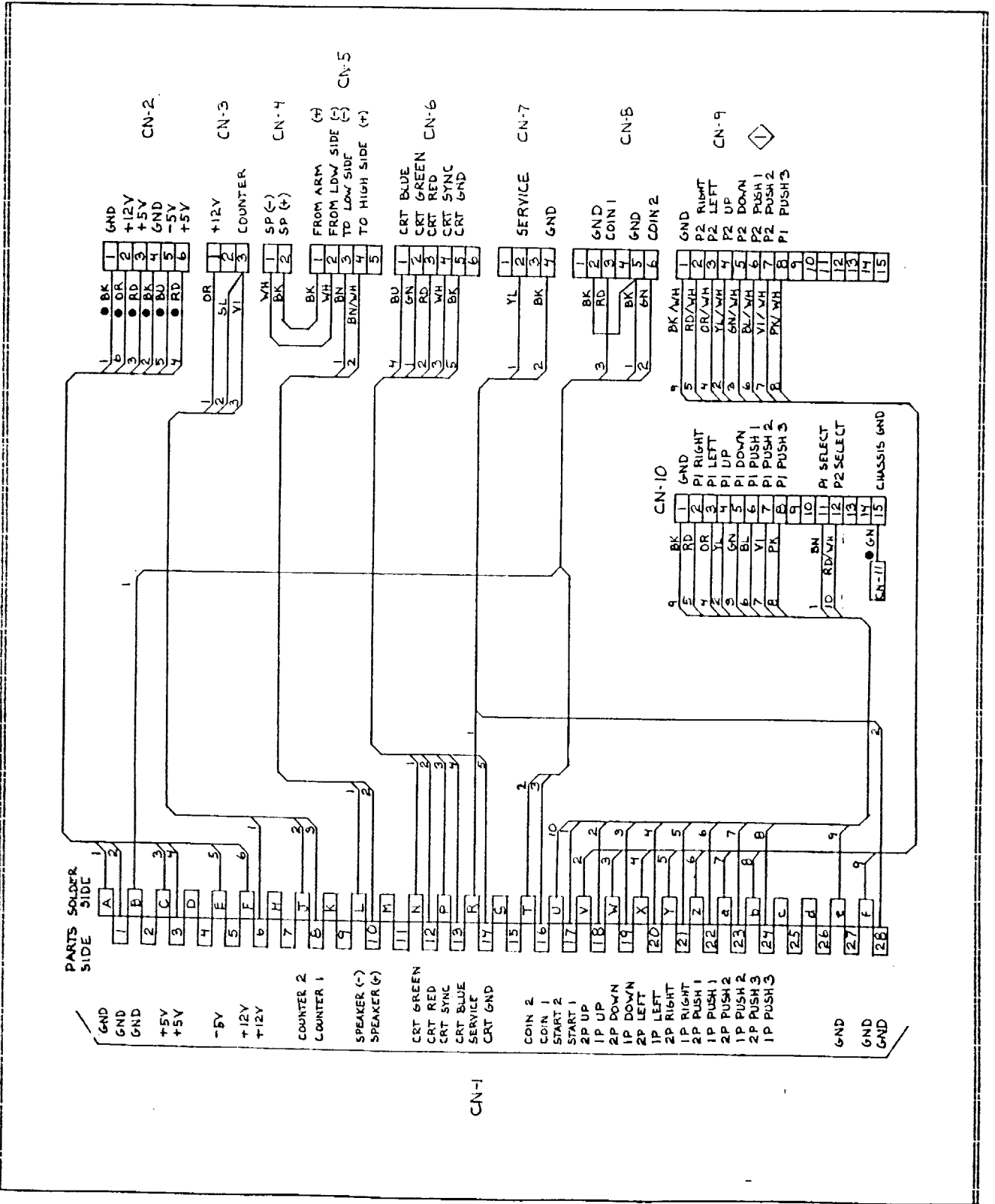
The Service Switch can be used to add credits to the game without incrementing the Coin Counter.

The fuses for the AC power line and the 12 volts for the Coin Door lamps are located on the Switch Bracket of the Power Supply assembly as is the ON/OFF switch. The fuse holders are labeled on the Switch Bracket as to the proper fuse ratings.

The +5 vdc adjustment level control is on the Power Supply's Switching Regulator is pre-set at the factory. In the event that an adjustment is required, measure the +5 volt level present at the game logic pcb with a Digital Multi-Meter while adjusting the output level of the Switching Regulator. The voltage must measure between +4.90 vdc to 5.10 vdc at the game logic pcb for proper operation.

WARNING: DANGEROUS VOLTAGE LEVELS ARE PRESENT IN AND AROUND THE MONITOR AND POWER SUPPLY ASSEMBLY. ADJUSTMENTS AND REPAIRS SHOULD BE ATTEMPTED ONLY BY QUALIFIED ELECTRONIC TECHNICIANS.

D. Wiring Diagram.



3. REPLACEMENT PARTS LIST

FINAL ASSEMBLY

CABINET, EMPTY, 1US30, GREY	365-0012-00*
CABINET, EMPTY, 1US25, GREY	365-0010-00
CONTROL PANEL ASSY., VIGILANTE	510-0127-00
COIN DOOR, COIN CONTROL 2 SLOT, WIDE	510-0127-00*
COIN DOOR ASSY., COIN CONTROL	510-0004-00
MONITOR ASSY., UNIVERSAL H/V	510-0120-00
POWER SUPPLY ASSY., 11AMP	510-0002-01
PCB SET, VIGILANTE	510-0124-00
RETAINER, PLEX, MONITOR	535-0073-00*
PLEX, CLEAR, DISPLAY 23.75 X 23.75	660-0001-01
UNDERLAY CARD, VIGILANTE	810-0028-00
LABEL, INSTR. VIGILANTE 'A'	406-0088-01
LABEL, INSTR. VIGILANTE 'B'	406-0088-02
DECAL, SIDE, VIGILANTE	820-0045-00
PLEX, MARQUEE, VIGILANTE	830-0036-00
RETAINER, PLEX, MARQUEE, CURVED	535-0078-00*
RETAINER, PLEX, MARQUEE	535-0009-00
SPEAKER, 6 X 9" OVAL	031-0006-00
HARNESS, MAIN, JAMMA STD. U/R	036-0159-00

CONTROL PANEL

CONTROL PANEL, BARE	535-0083-00
OVERLAY, CTRL PNL, VIGILANTE	800-0031-00
PUSHBUTTON, BLACK	350-0001-00
PUSHBUTTON, YELLOW	350-0001-04
PUSHBUTTON, BLUE	350-0001-06
HARNESS, CTRL PNL, 1P/2P, 2S.	036-0115-01
JOYSTICK, MONROE 4/8 WAY	450-0014-01

MISCELLANEOUS PARTS

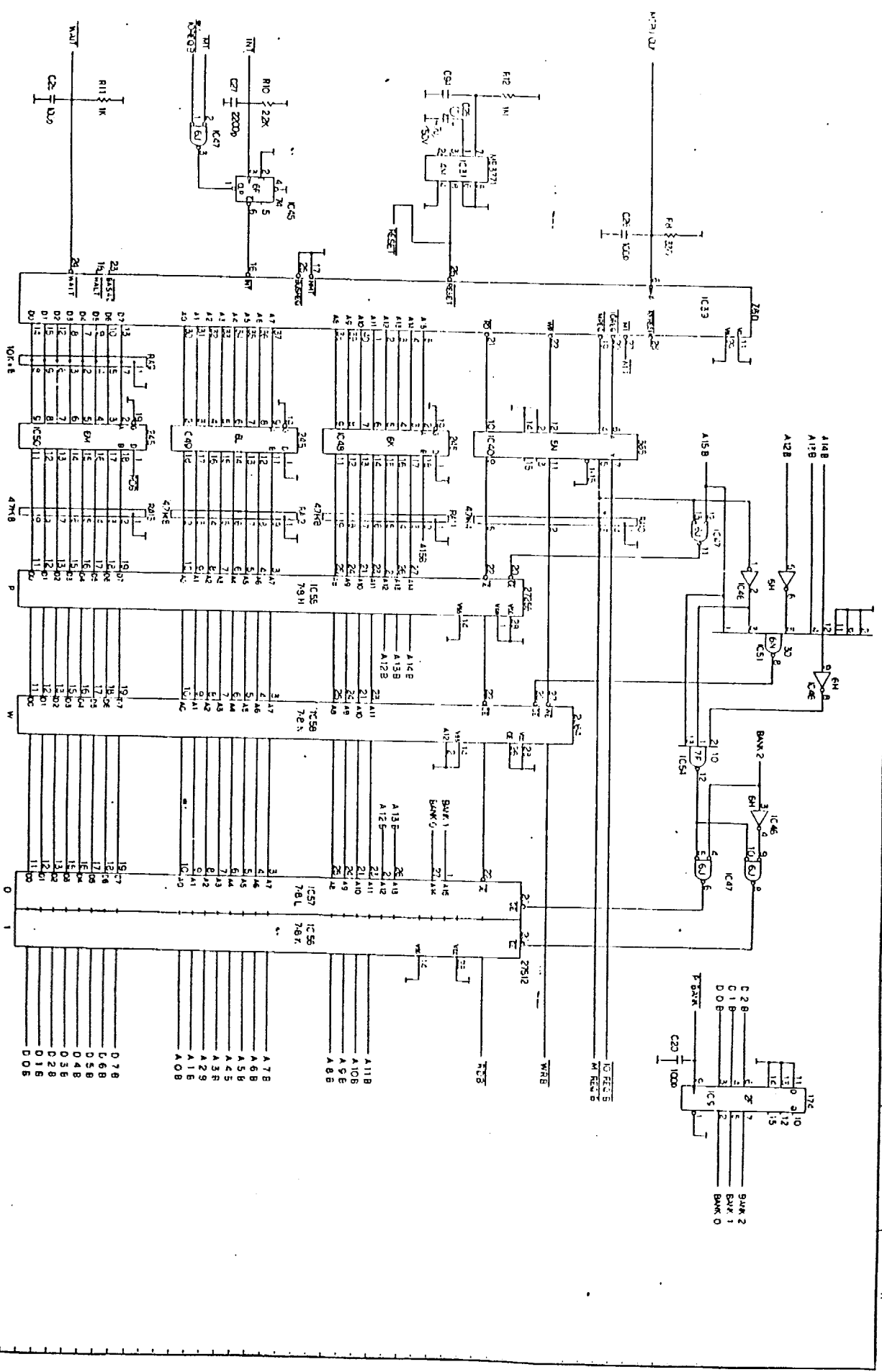
REGULATOR, 5V @ 11 A & 12V @ 1 A	001-0012-00
ISOLATION TRANSFORMER	010-0001-00
NOISE FILTER	150-0004-00
SWITCH BRACKET W/FUSEHOLDERS	515-0004-00
HARNESS, DC OUT, 11A	036-0031-02
CASHBOX, 3 SLOT, METAL	535-0076-00*
CASHBOX BRACKET, LOCKING	535-0077-00*
CASHBOX, PLASTIC	545-0004-00
FIXTURE, LAMP, DUAL	170-0002-00
LAMP, 40 WATT, INCANDESCENT	165-0004-01
LAMP, 14 VDC .19 AMP WEDGE, #161	165-0009-00
SERVICE PANEL ASSY.	515-0029-00
COIN COUNTER, 12 VOLT	090-0002-00
POT, 50 Ω 12.5W, 1/8" SHAFT	123-0009-12
POT, 100 Ω 4W 1/4" SHAFT (replaces above)	123-0008-11
SWITCH, PUSHBUTTON, MOM.	180-0022-00

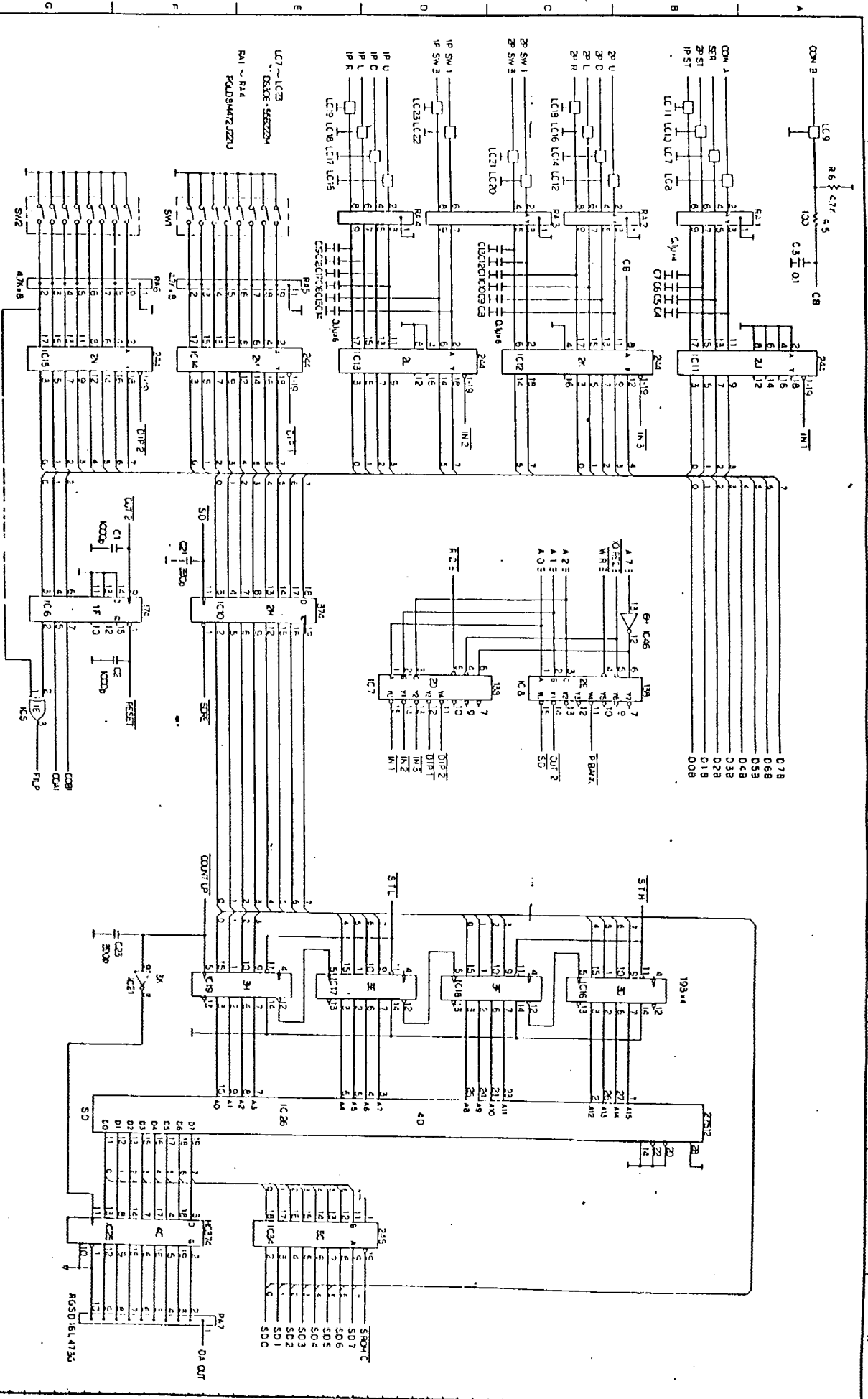
* = FIRST RELEASE VERSION ONLY

4. PCB SCHEMATIC DIAGRAMS

M75-A-B PCB: PAGES 1/5 THRU 5/5

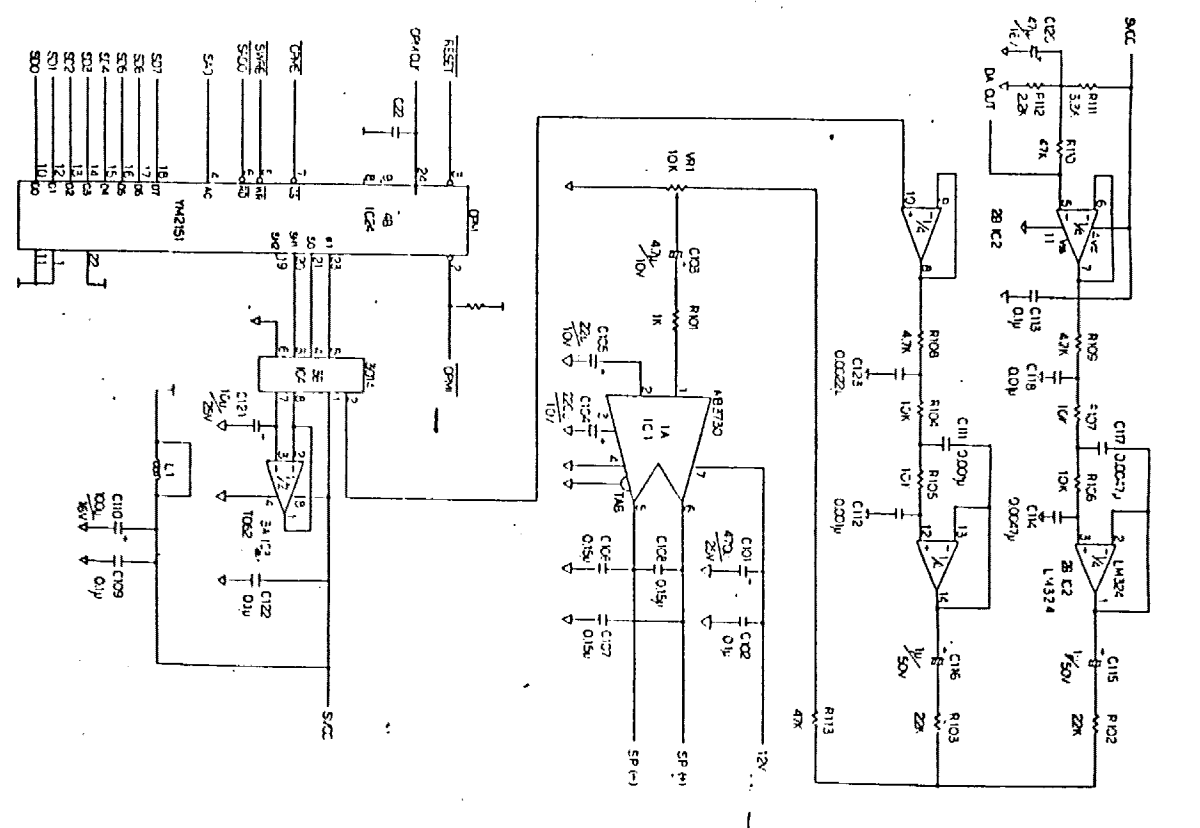
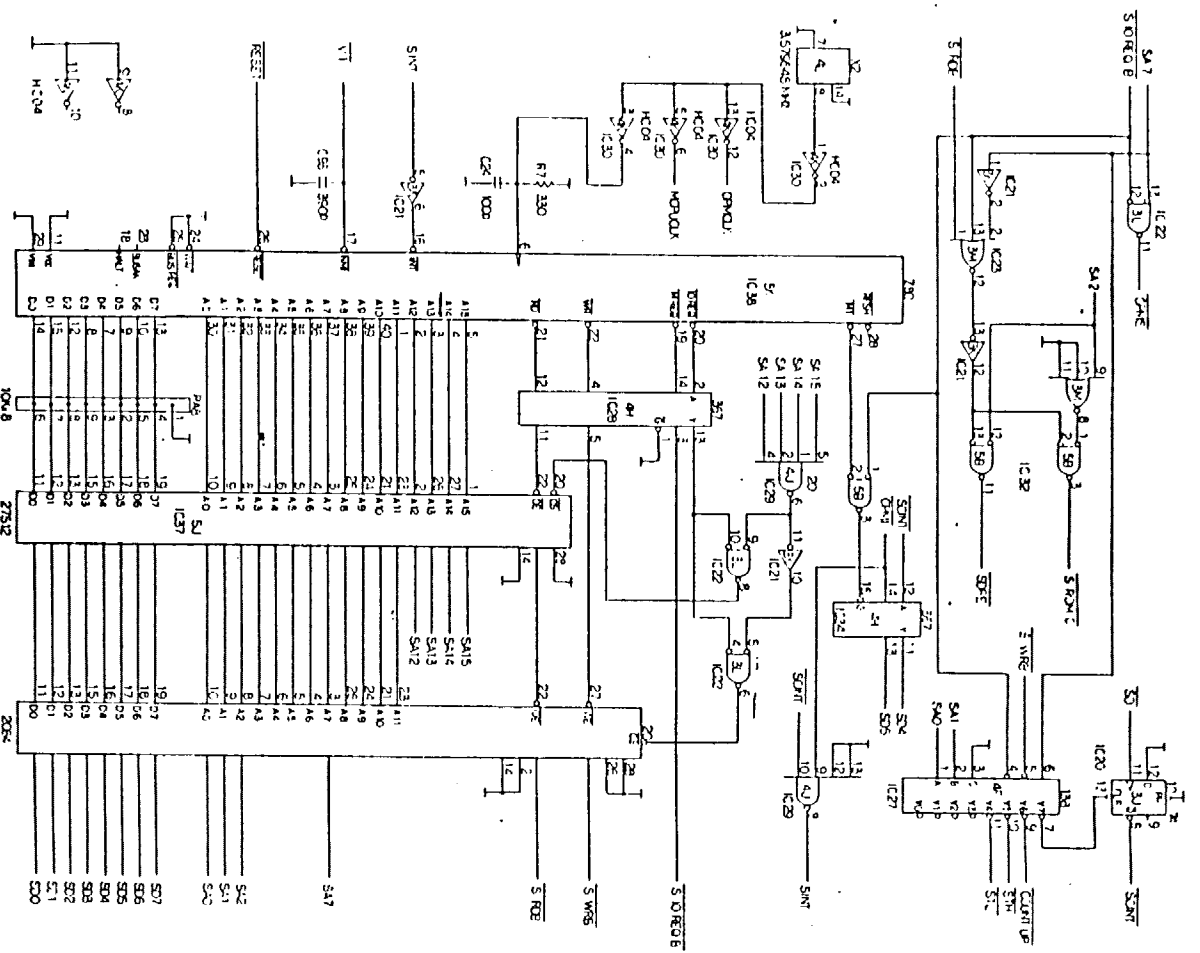
M75-B-A PCB: PAGES 1/7 THRU 7/7





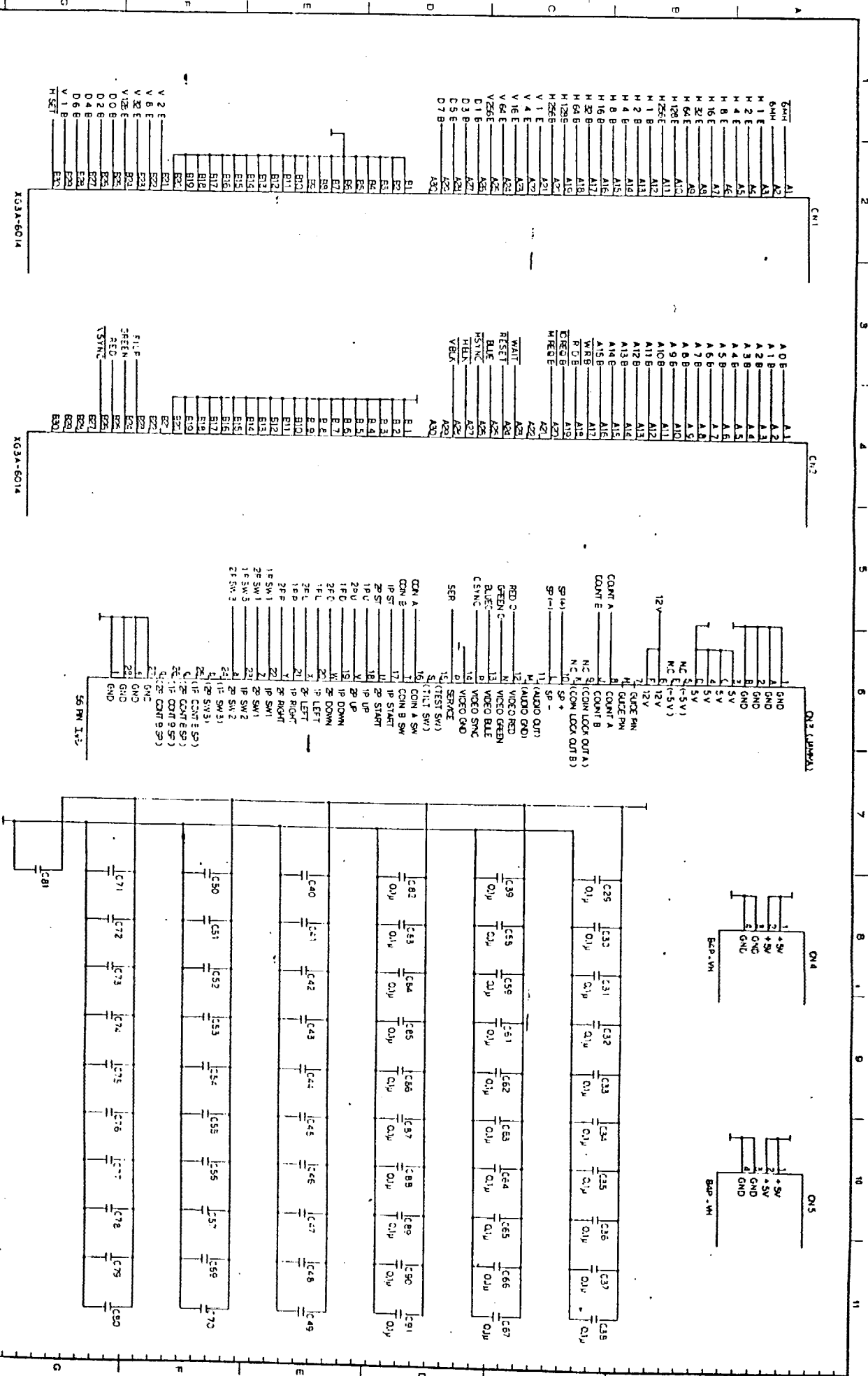
DATE	BY	CHKD	APP'D	REV	DESCRIPTION	MATERIAL	TITLE	MATERIAL CODE	REVISIONS
01/12/83	WJL	WJL	WJL	1	ASSEMBLY		M75-A		2/5
01/13/83	WJL	WJL	WJL	2	REVISED				
01/14/83	WJL	WJL	WJL	3	REVISED				
01/15/83	WJL	WJL	WJL	4	REVISED				
01/16/83	WJL	WJL	WJL	5	REVISED				
01/17/83	WJL	WJL	WJL	6	REVISED				
01/18/83	WJL	WJL	WJL	7	REVISED				
01/19/83	WJL	WJL	WJL	8	REVISED				
01/20/83	WJL	WJL	WJL	9	REVISED				
01/21/83	WJL	WJL	WJL	10	REVISED				
01/22/83	WJL	WJL	WJL	11	REVISED				
01/23/83	WJL	WJL	WJL	12	REVISED				
01/24/83	WJL	WJL	WJL	13	REVISED				
01/25/83	WJL	WJL	WJL	14	REVISED				
01/26/83	WJL	WJL	WJL	15	REVISED				
01/27/83	WJL	WJL	WJL	16	REVISED				
01/28/83	WJL	WJL	WJL	17	REVISED				
01/29/83	WJL	WJL	WJL	18	REVISED				
01/30/83	WJL	WJL	WJL	19	REVISED				
01/31/83	WJL	WJL	WJL	20	REVISED				
02/01/83	WJL	WJL	WJL	21	REVISED				
02/02/83	WJL	WJL	WJL	22	REVISED				
02/03/83	WJL	WJL	WJL	23	REVISED				
02/04/83	WJL	WJL	WJL	24	REVISED				
02/05/83	WJL	WJL	WJL	25	REVISED				
02/06/83	WJL	WJL	WJL	26	REVISED				
02/07/83	WJL	WJL	WJL	27	REVISED				
02/08/83	WJL	WJL	WJL	28	REVISED				
02/09/83	WJL	WJL	WJL	29	REVISED				
02/10/83	WJL	WJL	WJL	30	REVISED				
02/11/83	WJL	WJL	WJL	31	REVISED				
02/12/83	WJL	WJL	WJL	32	REVISED				
02/13/83	WJL	WJL	WJL	33	REVISED				
02/14/83	WJL	WJL	WJL	34	REVISED				
02/15/83	WJL	WJL	WJL	35	REVISED				
02/16/83	WJL	WJL	WJL	36	REVISED				
02/17/83	WJL	WJL	WJL	37	REVISED				
02/18/83	WJL	WJL	WJL	38	REVISED				
02/19/83	WJL	WJL	WJL	39	REVISED				
02/20/83	WJL	WJL	WJL	40	REVISED				
02/21/83	WJL	WJL	WJL	41	REVISED				
02/22/83	WJL	WJL	WJL	42	REVISED				
02/23/83	WJL	WJL	WJL	43	REVISED				
02/24/83	WJL	WJL	WJL	44	REVISED				
02/25/83	WJL	WJL	WJL	45	REVISED				
02/26/83	WJL	WJL	WJL	46	REVISED				
02/27/83	WJL	WJL	WJL	47	REVISED				
02/28/83	WJL	WJL	WJL	48	REVISED				
02/29/83	WJL	WJL	WJL	49	REVISED				
02/30/83	WJL	WJL	WJL	50	REVISED				

CHANGE
 USER
 NAMEO NANAO CORPORATION
 TITLE M75-A
 DATE 01/12/83
 DRAW NO E-00143
 SHEET 2/5



COMPONENT	VALUE	REF. DESIG.	QTY	UNIT
SA1	10K	SA1	1	RES
SA2	10K	SA2	1	RES
SA3	10K	SA3	1	RES
SA4	10K	SA4	1	RES
SA5	10K	SA5	1	RES
SA6	10K	SA6	1	RES
SA7	10K	SA7	1	RES
SA8	10K	SA8	1	RES
SA9	10K	SA9	1	RES
SA10	10K	SA10	1	RES
SA11	10K	SA11	1	RES
SA12	10K	SA12	1	RES
SA13	10K	SA13	1	RES
SA14	10K	SA14	1	RES
SA15	10K	SA15	1	RES
SA16	10K	SA16	1	RES
SA17	10K	SA17	1	RES
SA18	10K	SA18	1	RES
SA19	10K	SA19	1	RES
SA20	10K	SA20	1	RES
SA21	10K	SA21	1	RES
SA22	10K	SA22	1	RES
SA23	10K	SA23	1	RES
SA24	10K	SA24	1	RES
SA25	10K	SA25	1	RES
SA26	10K	SA26	1	RES
SA27	10K	SA27	1	RES
SA28	10K	SA28	1	RES
SA29	10K	SA29	1	RES
SA30	10K	SA30	1	RES
SA31	10K	SA31	1	RES
SA32	10K	SA32	1	RES
SA33	10K	SA33	1	RES
SA34	10K	SA34	1	RES
SA35	10K	SA35	1	RES
SA36	10K	SA36	1	RES
SA37	10K	SA37	1	RES
SA38	10K	SA38	1	RES
SA39	10K	SA39	1	RES
SA40	10K	SA40	1	RES
SA41	10K	SA41	1	RES
SA42	10K	SA42	1	RES
SA43	10K	SA43	1	RES
SA44	10K	SA44	1	RES
SA45	10K	SA45	1	RES
SA46	10K	SA46	1	RES
SA47	10K	SA47	1	RES
SA48	10K	SA48	1	RES
SA49	10K	SA49	1	RES
SA50	10K	SA50	1	RES
SA51	10K	SA51	1	RES
SA52	10K	SA52	1	RES
SA53	10K	SA53	1	RES
SA54	10K	SA54	1	RES
SA55	10K	SA55	1	RES
SA56	10K	SA56	1	RES
SA57	10K	SA57	1	RES
SA58	10K	SA58	1	RES
SA59	10K	SA59	1	RES
SA60	10K	SA60	1	RES
SA61	10K	SA61	1	RES
SA62	10K	SA62	1	RES
SA63	10K	SA63	1	RES
SA64	10K	SA64	1	RES
SA65	10K	SA65	1	RES
SA66	10K	SA66	1	RES
SA67	10K	SA67	1	RES
SA68	10K	SA68	1	RES
SA69	10K	SA69	1	RES
SA70	10K	SA70	1	RES
SA71	10K	SA71	1	RES
SA72	10K	SA72	1	RES
SA73	10K	SA73	1	RES
SA74	10K	SA74	1	RES
SA75	10K	SA75	1	RES
SA76	10K	SA76	1	RES
SA77	10K	SA77	1	RES
SA78	10K	SA78	1	RES
SA79	10K	SA79	1	RES
SA80	10K	SA80	1	RES
SA81	10K	SA81	1	RES
SA82	10K	SA82	1	RES
SA83	10K	SA83	1	RES
SA84	10K	SA84	1	RES
SA85	10K	SA85	1	RES
SA86	10K	SA86	1	RES
SA87	10K	SA87	1	RES
SA88	10K	SA88	1	RES
SA89	10K	SA89	1	RES
SA90	10K	SA90	1	RES
SA91	10K	SA91	1	RES
SA92	10K	SA92	1	RES
SA93	10K	SA93	1	RES
SA94	10K	SA94	1	RES
SA95	10K	SA95	1	RES
SA96	10K	SA96	1	RES
SA97	10K	SA97	1	RES
SA98	10K	SA98	1	RES
SA99	10K	SA99	1	RES
SA100	10K	SA100	1	RES

NANAO CORPORATION
 M75-A
 4/5
 E-COM/43



XG3A-6014

XG3A-6014

XG3A-6014

56 PM 1A5

12V

CON A SW

CON B SW

IP START

IP STOP

WAIT

RESET

RED

GREEN

BLUE

VIDEO GREEN

VIDEO BLUE

VIDEO SYNC

VIDEO GND

SER

SERVICE

TEST SW

CON A SW

CON B SW

IP START

IP STOP

IP UP

IP DOWN

IP LEFT

IP RIGHT

IP SW1

IP SW2

IP SW3

IP SW4

IP SW5

IP SW6

IP SW7

IP SW8

IP SW9

IP SW10

IP SW11

IP SW12

IP SW13

IP SW14

IP SW15

IP SW16

IP SW17

IP SW18

IP SW19

IP SW20

IP SW21

IP SW22

IP SW23

IP SW24

IP SW25

IP SW26

IP SW27

IP SW28

IP SW29

IP SW30

IP SW31

IP SW32

IP SW33

IP SW34

IP SW35

IP SW36

IP SW37

IP SW38

IP SW39

IP SW40

IP SW41

IP SW42

IP SW43

IP SW44

IP SW45

IP SW46

IP SW47

IP SW48

IP SW49

IP SW50

IP SW51

IP SW52

IP SW53

IP SW54

IP SW55

IP SW56

IP SW57

IP SW58

IP SW59

IP SW60

IP SW61

IP SW62

IP SW63

IP SW64

IP SW65

IP SW66

IP SW67

IP SW68

IP SW69

IP SW70

IP SW71

IP SW72

IP SW73

IP SW74

IP SW75

IP SW76

IP SW77

IP SW78

IP SW79

IP SW80

IP SW81

IP SW82

IP SW83

IP SW84

IP SW85

IP SW86

IP SW87

IP SW88

IP SW89

IP SW90

IP SW91

IP SW92

IP SW93

IP SW94

IP SW95

IP SW96

IP SW97

IP SW98

IP SW99

IP SW100

IP SW101

IP SW102

IP SW103

IP SW104

IP SW105

IP SW106

IP SW107

IP SW108

IP SW109

IP SW110

IP SW111

IP SW112

IP SW113

IP SW114

IP SW115

IP SW116

IP SW117

IP SW118

IP SW119

IP SW120

IP SW121

IP SW122

IP SW123

IP SW124

IP SW125

IP SW126

IP SW127

IP SW128

IP SW129

IP SW130

IP SW131

IP SW132

IP SW133

IP SW134

IP SW135

IP SW136

IP SW137

IP SW138

IP SW139

IP SW140

IP SW141

IP SW142

IP SW143

IP SW144

IP SW145

IP SW146

IP SW147

IP SW148

IP SW149

IP SW150

IP SW151

IP SW152

IP SW153

IP SW154

IP SW155

IP SW156

IP SW157

IP SW158

IP SW159

IP SW160

IP SW161

IP SW162

IP SW163

IP SW164

IP SW165

IP SW166

IP SW167

IP SW168

IP SW169

IP SW170

IP SW171

IP SW172

IP SW173

IP SW174

IP SW175

IP SW176

IP SW177

IP SW178

IP SW179

IP SW180

IP SW181

IP SW182

IP SW183

IP SW184

IP SW185

IP SW186

IP SW187

IP SW188

IP SW189

IP SW190

IP SW191

IP SW192

IP SW193

IP SW194

IP SW195

IP SW196

IP SW197

IP SW198

IP SW199

IP SW200

IP SW201

IP SW202

IP SW203

IP SW204

IP SW205

IP SW206

IP SW207

IP SW208

IP SW209

IP SW210

IP SW211

IP SW212

IP SW213

IP SW214

IP SW215

IP SW216

IP SW217

IP SW218

IP SW219

IP SW220

IP SW221

IP SW222

IP SW223

IP SW224

IP SW225

IP SW226

IP SW227

IP SW228

IP SW229

IP SW230

IP SW231

IP SW232

IP SW233

IP SW234

IP SW235

IP SW236

IP SW237

IP SW238

IP SW239

IP SW240

IP SW241

IP SW242

IP SW243

IP SW244

IP SW245

IP SW246

IP SW247

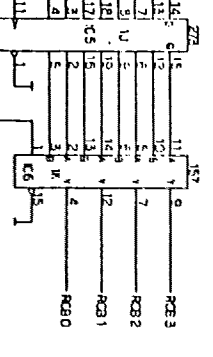
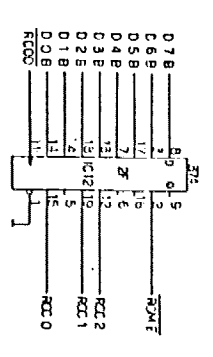
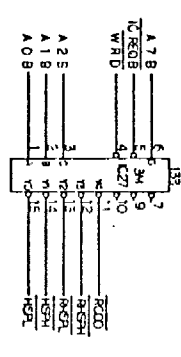
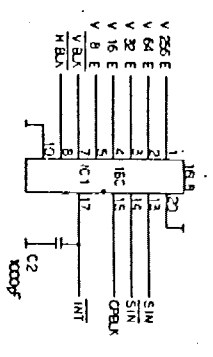
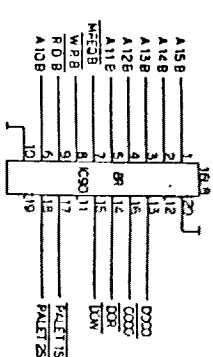
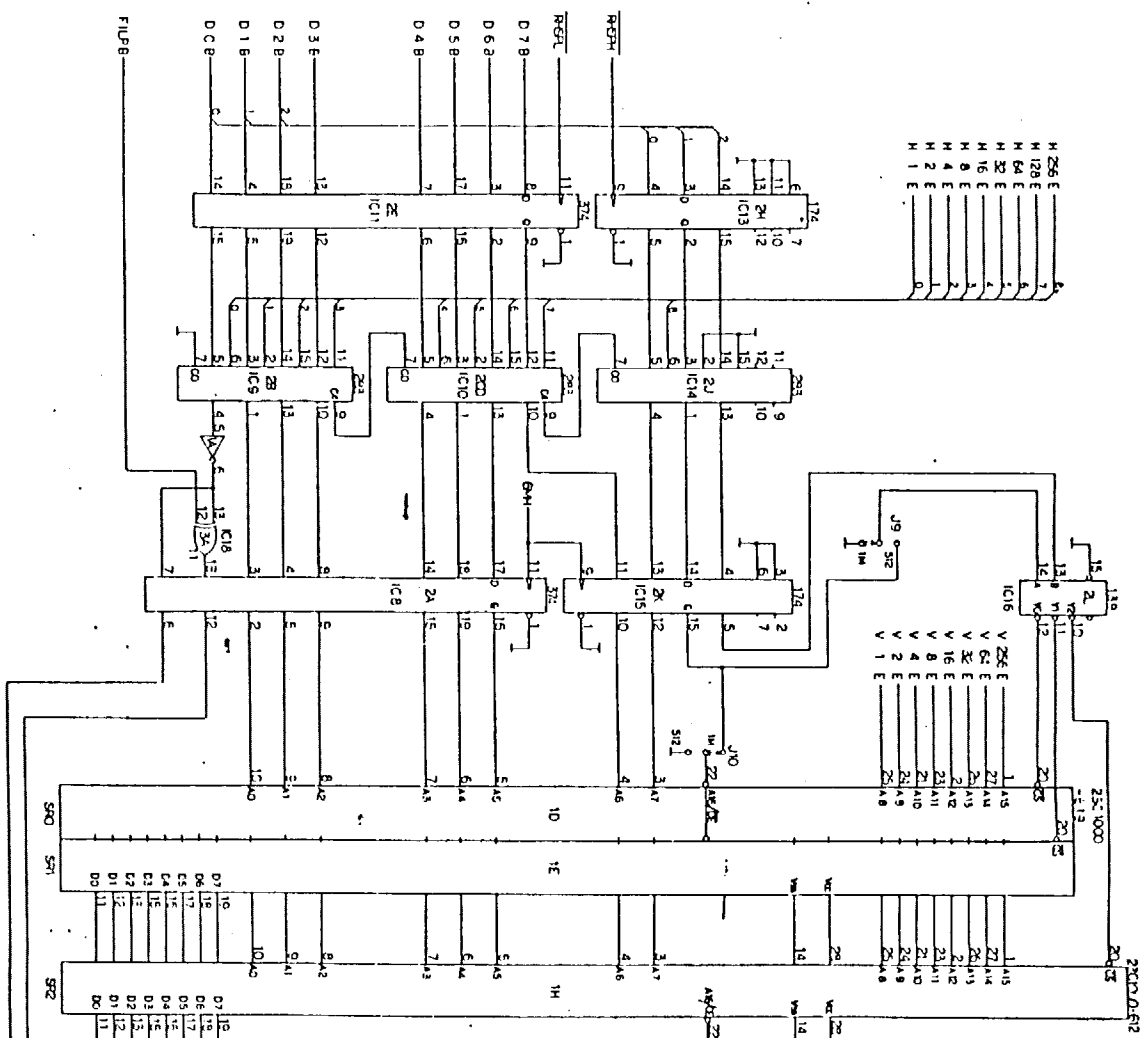
IP SW248

IP SW249

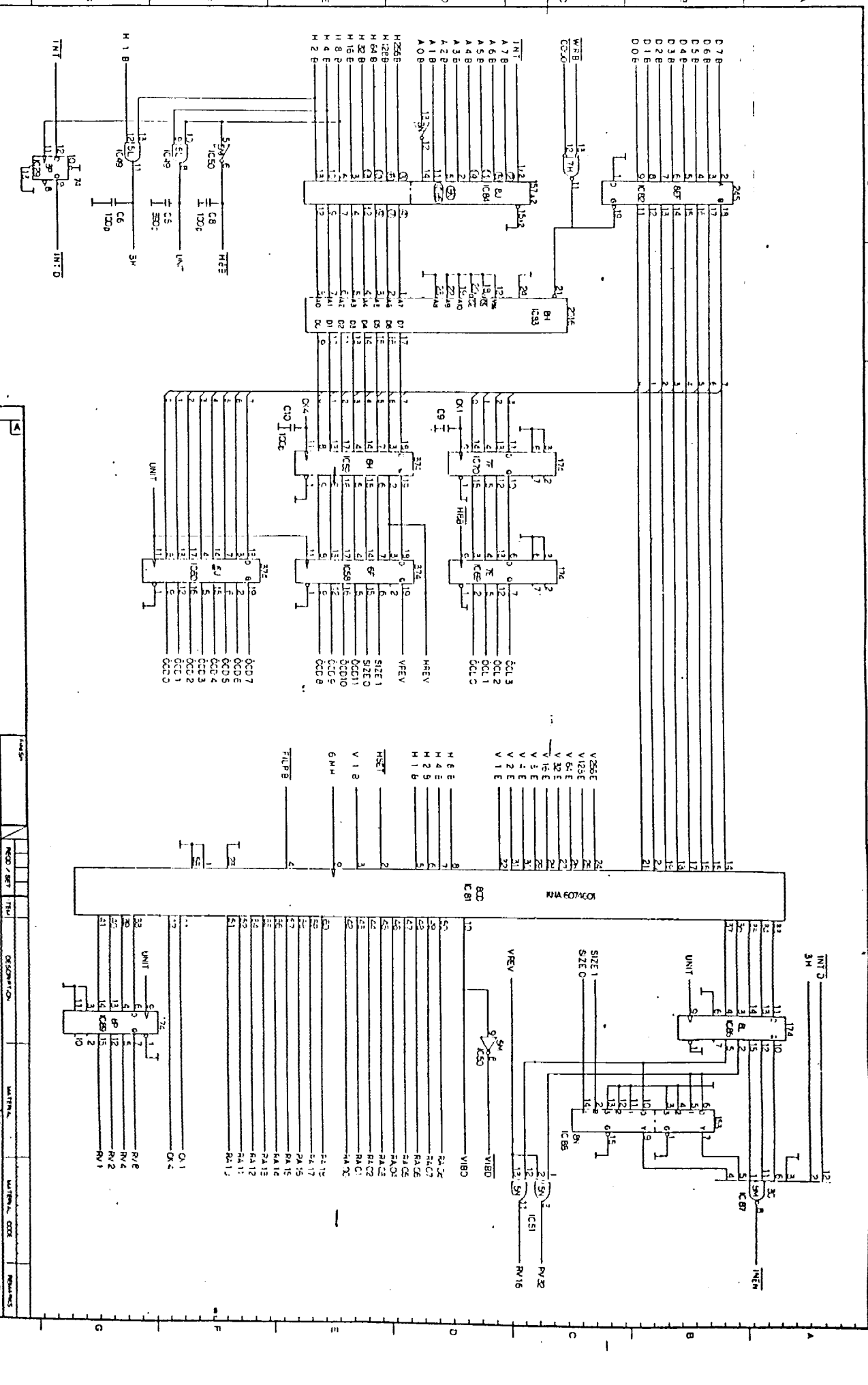
IP SW250

IP SW251

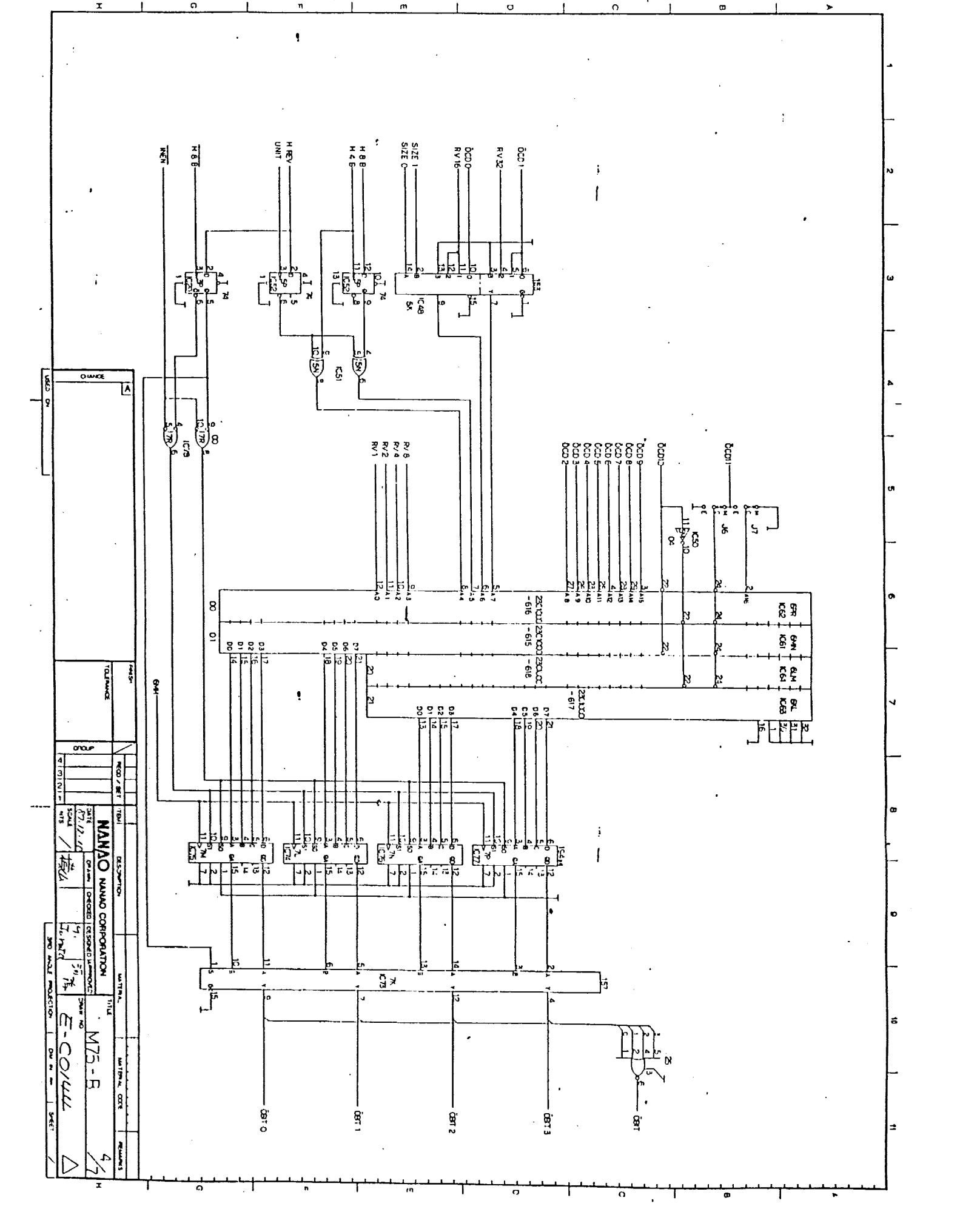
IP SW252



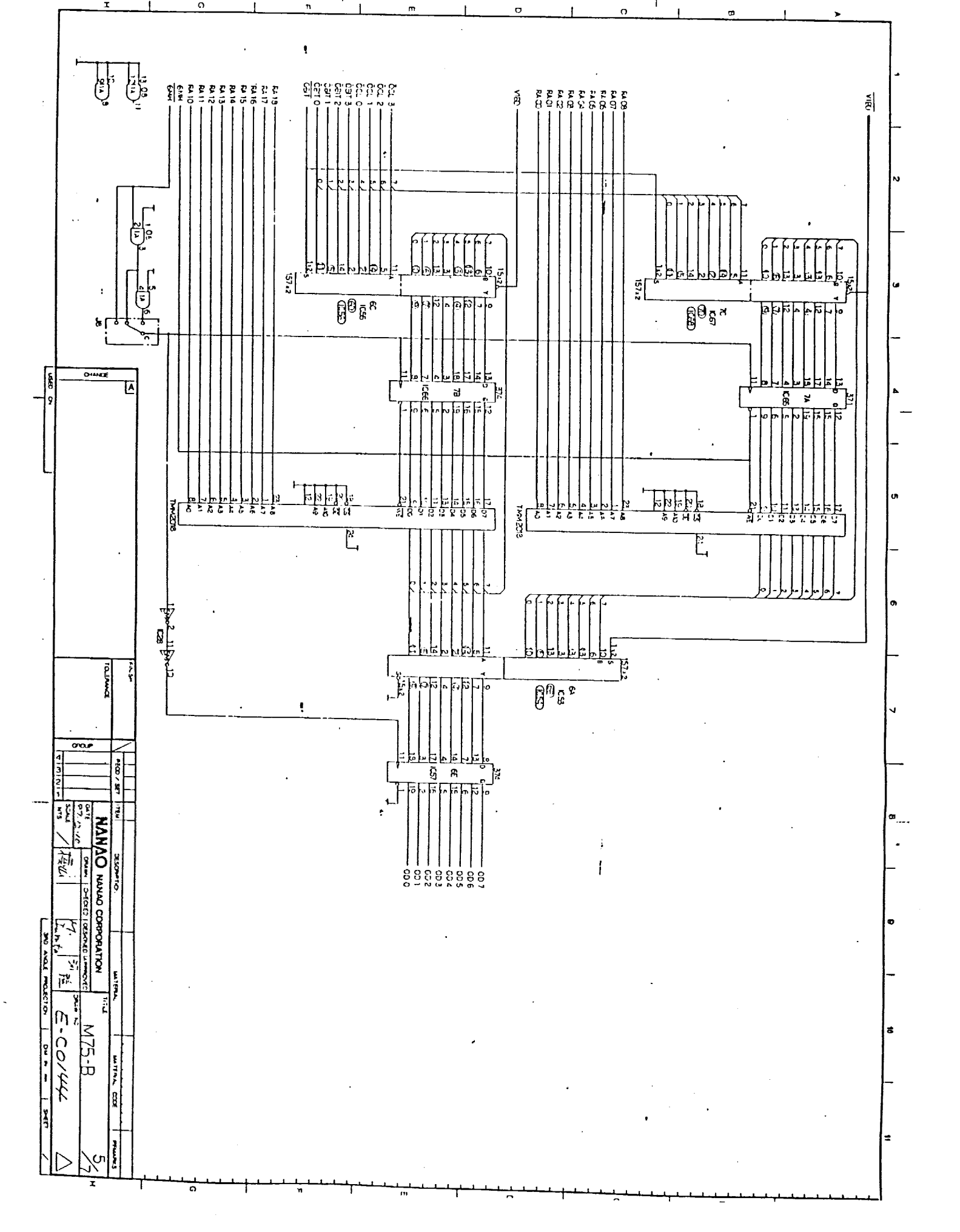
DATE		DRAWN		CHECKED		DESIGNED		APPROVED	
7/12/10		M. H.		M. H.		M. H.		M. H.	
SCALE		1/1		1/1		1/1		1/1	
SHEET		1/1		1/1		1/1		1/1	
<p>MANAO CORPORATION</p> <p>MODEL NO. M75-B</p> <p>DATE: 7/12/10</p> <p>DRAWN: M. H.</p> <p>CHECKED: M. H.</p> <p>DESIGNED: M. H.</p> <p>APPROVED: M. H.</p> <p>SCALE: 1/1</p> <p>SHEET: 1/1</p>									



OWNER		MANDO CORPORATION		MANDO CORPORATION		MANDO CORPORATION		MANDO CORPORATION		MANDO CORPORATION	
TOLERANCE		8		8		8		8		8	
MATERIAL		MATERIAL		MATERIAL		MATERIAL		MATERIAL		MATERIAL	
DATE		DATE		DATE		DATE		DATE		DATE	
REVISED		REVISED		REVISED		REVISED		REVISED		REVISED	
DRAWN		DRAWN		DRAWN		DRAWN		DRAWN		DRAWN	
CHECKED		CHECKED		CHECKED		CHECKED		CHECKED		CHECKED	
APPROVED		APPROVED		APPROVED		APPROVED		APPROVED		APPROVED	
TITLE		TITLE		TITLE		TITLE		TITLE		TITLE	
M75-B		M75-B		M75-B		M75-B		M75-B		M75-B	
E-CO1111		E-CO1111		E-CO1111		E-CO1111		E-CO1111		E-CO1111	
3/7		3/7		3/7		3/7		3/7		3/7	



DATE: 7/11/10		DRAWN: [Signature]		CHECKED: [Signature]		DESIGNED: [Signature]		TITLE: M75-R		SHEET: 4/7	
SCALE: 1/8"		SHEET: 1/1		SHEET: 2/1		SHEET: 3/1		SHEET: 4/1		SHEET: 5/1	
PROJECT: M75-R		DRAWING: E-CO/1111		SHEET: 4/7		DATE: 7/11/10		DRAWN: [Signature]		CHECKED: [Signature]	
DESIGNER: [Signature]		DRAWER: [Signature]		CHECKER: [Signature]		DESIGNER: [Signature]		TITLE: M75-R		SHEET: 4/7	
PROJECT: M75-R		DRAWING: E-CO/1111		SHEET: 4/7		DATE: 7/11/10		DRAWN: [Signature]		CHECKED: [Signature]	



CHANGE		USED ON	
TOLERANCE		REWORK / SET	
DATE		DATE	
DRAWN		CHECKED	
DATE		DATE	
MATERIAL		MATERIAL	
TITLE		TITLE	
M75-B		M75-B	
E-CO144		E-CO144	
SHEET		SHEET	
5/7		5/7	

DATE 10-1-0

