

RADICA®

PLAY TV Jr.

CONSTRUCTION

BUILD AND DIG ON YOUR TV!



Model 72041
1 Players / Ages 4 and up
INSTRUCTION MANUAL
P/N 82369700 Rev.A

Get off the couch and into get in a big rig!

Join the construction guide and drive a big rig, build a house, and even catch some fish in the town pond. Get ready to help out the towns people with 7 different construction activities to choose from.

Setting Up Radica Play TV Jr. Construction

SETTING UP

BATTERY INSTALLATION

On the back of the main unit, open the battery compartment and insert four (4) C batteries as indicated inside the compartment (alkaline batteries recommended). Replace the battery compartment door.

NOTE: Batteries in the Main Unit should give you about 10 hours of game play (if alkaline batteries are used). The game will not operate normally when the batteries begin to run low. The screen may be blurred and resetting the game may not work. Be sure to install fresh batteries. There is also no memory function. All game data will be erased when the power is turned off or batteries are replaced.

TV Connection

NOTE: To connect Play TV Jr. Construction directly to a TV, the TV must be equipped with audio and video input jacks. They are commonly found on the front of the TV near the contrast, color, and picture adjustment controls or on the rear of the TV near the antenna and cable/satellite jacks.

If your TV has audio and video input jacks, insert the yellow video plug from the Main Unit into the video-in (yellow) jack on your TV, the white audio plug into the left audio-in (white) jack. Then set the TV to the appropriate video input mode (see your TV's operating manual for details).

If your TV does not have audio and video input jacks, you may connect Play TV Jr. Construction through a VCR connected to your TV.

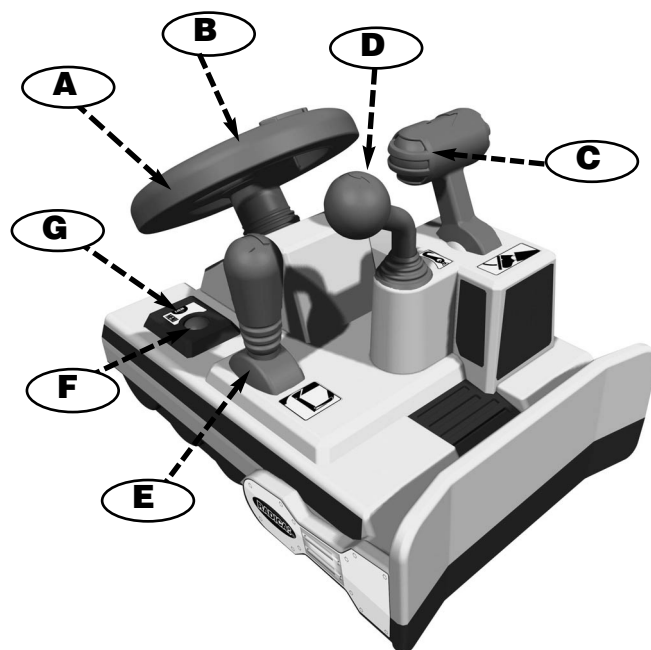
CONNECTING TO A VCR

To connect Play TV Jr. Construction to your VCR, insert the yellow video plug from the Main Unit into the video-in (Yellow) jack on your VCR, the white audio plug into the left audio-in (white) jack. Then set the VCR to the appropriate video input mode (see your VCR's operating manual for details).

ADULT SUPERVISION IS RECOMMENDED WHEN CONNECTING CABLES TO A TV AND VCR.

The Playset Controls

The Play TV Construction Jr. playset features several vehicle controls that are used in different times during play. Each control is described below.



A. Steering Wheel - Turn the wheel to control the direction your vehicle will be heading and to guide your way through the Town Map.

B. Horn - Push the horn to start an activity.
Hint: Push the horn to skip beginning demonstration to begin to play.

C. Gear Shift - Move back and forth to move your vehicle.

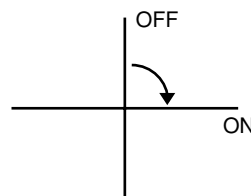
D. Handle - Slide the lever left or right to move (i.e. the crane in Crane Fishing)

E. Lever - Push the lever backward and forward in the direction of the arrow.

F. Cancel button - Press to exit an activity.

G. Reset button - Press to reset game.

Ignition Key - Turn the key to turn the engine on and off (to turn clockwise and 90° is ON)



Now it's time for Construction Fun!

Town Map

When you first begin playing, you will be taken to the Town Map. This is where you choose what activity you want to play. The construction guide will instruct you through the different activities.

NOTE TO PARENTS: When children are playing this for the first time we suggest that the child starts off with an activity that is untimed (i.e. Crane Construction or Pave the Road).

Choose from the following 7 construction sites:

Crane Construction - You are in charge! Build your own home by choosing and stacking a set of different floors.

Bull Dozer - You're needed to help build a playground. Use your bull dozer to push the rocks to clear the trees so the playground can be built.



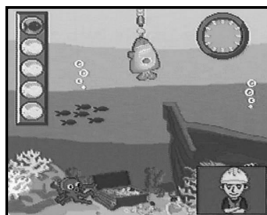
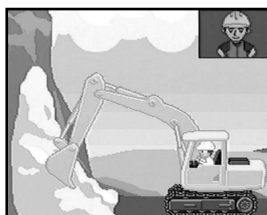
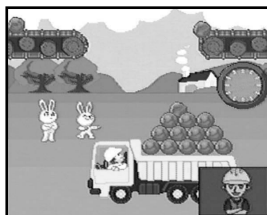
Dump Truck - Help the construction site! Catch rocks and other special items from the conveyor belt and into your dump truck before time runs out!

Crusher - You're needed to crush the rocks that are scattered everywhere. Drive your excavator to crush the rocks.

Digger - You're needed to dig a hole through the mountain to allow railroad tracks for trains to be built. Collect special items as you dig.

Pave the Road - You're needed to fill a hole with dirt so the road can be paved for the towns people.

Crane Fishing - It's time to catch dinner! Use your crane to catch the fish that swim in the town lake before time runs out.



BATTERY INSTALLATION:

- This product is powered by four (4) C batteries (we recommend alkaline).
- Using a screwdriver, loosen the screw until the battery compartment door on the back of product can be removed.
 - Insert four (4) C batteries (we recommend alkaline) as indicated inside the battery compartment.
 - Replace the battery compartment door and tighten the screw with a screwdriver. Do not over-tighten.

ADULT SUPERVISION IS RECOMMENDED WHEN CHANGING BATTERIES.

CAUTION:

- As with all small batteries, the batteries used with this product should be kept away from small children who might still put things in their mouths. If a battery is swallowed, consult a physician immediately.
- Be sure you insert the battery correctly and always follow the product and battery manufacturer's instructions.
- Do not dispose of batteries in fire.
- Batteries might leak if improperly installed, or explode if recharged, disassembled or heated.

MAINTENANCE:

- Handle this product carefully.
- Store this product away from dusty or dirty areas.
- Keep this product away from moisture or extreme temperature.
- Do not disassemble this product. If a problem occurs, press the RESET button, or remove and replace the batteries to reset the computer or try new batteries. If problems persist, consult the Warranty information located at the end of this Instruction Manual.
- Use only the recommended battery type.
- Do not mix old and new batteries.
- Do not mix alkaline, standard (carbon-zinc) or rechargeable (nickel-cadmium) batteries.
- Do not use rechargeable batteries.
- Do not attempt to recharge non-rechargeable batteries.
- Remove any exhausted batteries from this product.
- Do not short-circuit the supply terminals.
- Insert batteries with the correct polarity.

Please retain this for future reference.

90-DAY LIMITED WARRANTY

(This product warranty is valid in the United States and Canada only)
Radica China Limited warrants this product for a period of 90 days from the original purchase date under normal use against defective workmanship and materials (batteries excluded). This warranty does not cover damage resulting from accident, unreasonable use, negligence, improper service or other causes not arising out of defects in material or workmanship. Radica China Limited will not be liable for any costs incurred due to loss of use of this product or other incidental or consequential costs, expenses or damages incurred by the purchaser. Some states do not allow the exclusion or limitation of incidental or consequential damages, so the above limitations

may not apply to you. This warranty gives you specific legal rights and you may also have other legal rights, which vary from state to state.

During this 90-day warranty period, the game will either be repaired or replaced (at our option) without charge to the purchaser when returned prepaid with proof of date of purchase to: **Radica USA, Ltd., 13628-A Beta Road, Dallas, Texas 75244, USA.** Please remove the batteries and wrap the unit carefully before shipping. Please include a brief description of the problem along with your return address and mail it postage prepaid. Products returned after the 90-day period has expired will be repaired or replaced (at our option) for a service charge of US \$10.00. Payment must be made by check or money order. This extended service will only be available for one year from the date of purchase.

IMPORTANT: Before returning the unit for repair, test it with fresh alkaline batteries. Even new batteries may be defective or weak and low battery power is a frequent cause of unsatisfactory operation.

WARNING: EPILEPSY AND SEIZURES

READ BEFORE OPERATING YOUR PLAY TV

A few people may experience epileptic seizures when viewing flashing lights or patterns in our daily environment. These persons may experience seizures while watching TV pictures or playing video games. Players who have not had any seizures may nonetheless have an undetected epileptic condition.

Consult your physician before playing video games if you have an epileptic condition or experience any of the following symptoms while playing video games: altered vision, eye or muscle twitching, other involuntary movements, loss of awareness of your surroundings, mental confusion and/or convulsions.

**Check out other Play TV products on www.radicagames.com.
Look for Play TV Soccer, Baseball 2, Snowboarding, Boxing, Buckmasters Huntin', and Fishin' for 8 and up.**

RADICA®

PLAY TV JR. CONSTRUCTION IS A
TRADEMARK OF RADICA CHINA LTD
© 2002 RADICA CHINA LTD
© TAKARA CO., LTD. 2002
© 2002 SSD COMPANY LIMITED
PRODUCT SHAPE™
ALL RIGHTS RESERVED

XAVIX® IS A REGISTERED
TRADEMARK OF SHINSEDAI CO.
LIMITED

