

MP3 and Photo viewer 1.0

Instructions

contents

Software Requirements

Installing The Software

Getting Started

Running Juice Box™ Software

Downloading Music or Pictures

Ripping Music from CDs

Using your Selections with the Juice Box™ player

Quickstart

Juice Box™ player FAQ

software requirements

The following system is required to run the Juice Box™ card reader software:

Personal computer running Windows® 98SE or higher operating systems.

500 MHz processor or greater.

128 MB of available RAM.

100 MB of available hard drive space.

CD-ROM drive.

Built-in USB port.

Color monitor with minimum resolution of 800x600 pixels; High Color (16-bit) or True Color (24-bit) recommended.

installing the software

This program was designed and manufactured to work within existing industry standards. Computers with Windows® 2000, Windows® XP or Windows® XP Pro may need administrator privileges to install this software. See your computer user's guide for details.

1. Insert the Juice Box™ card reader software CD into your CD-ROM drive.
2. If the AutoPlay feature is enabled for your CD-ROM, left-click on the Install button and skip the next two steps.
3. If you don't have AutoPlay enabled, left-click on the Start Menu. Then select Run from the Windows® Taskbar.
4. Type d:setup.exe (d: refers to your CD-ROM drive. If your CD-ROM drive letter is not d: please use the appropriate drive letter instead.)
5. Follow the instructions that appear on your screen.

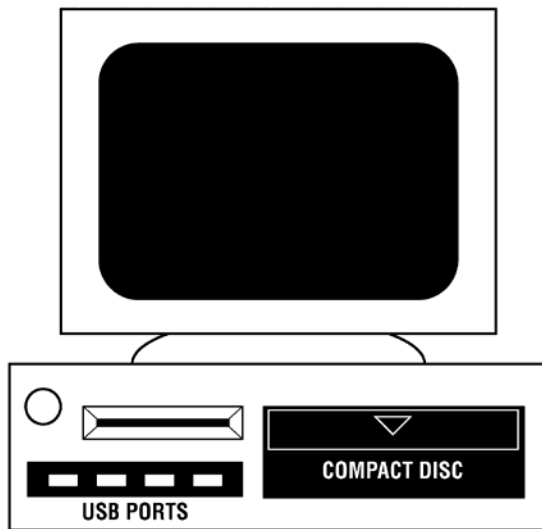
After installation is complete, you will find an icon for the Juice Box™ card reader software on your desktop. You will also find an icon in the Juice Box™ menu item within Programs under the Start Menu in the Windows® Taskbar.

Caution: After installing the Juice Box™ Card Reader software, you must have the USB-compatible card reader plugged into the computer in order to access all of the functions of this software.

getting started

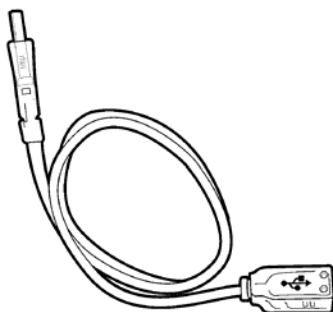
Installing the USB Card Reader

In order to transfer music or pictures from your computer to the Juice Box™ player, you must have your USB-compatible card reader installed. The reader can be plugged into any USB port available on your computer.



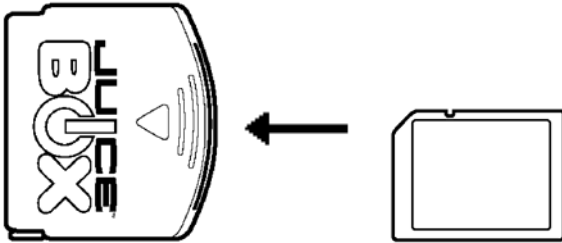
Using a USB Extension Cord (if needed)

If your USB port is located in the back of the computer, you can use the USB cable as an extension so that your card reader is still accessible from the front.



Creating a Juice Box™ formatted chip

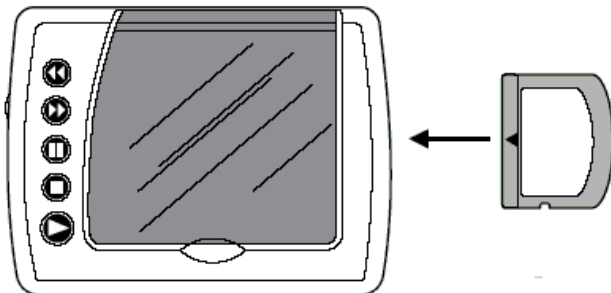
The Juice Box™ media player tags most SD or MMC storage chips with a special code so that the Juice Box™ software recognizes the chip as suitable for downloads. Tagging a chip takes a few simple steps:



Take the new SD or MMC storage chip and insert it into the Juice Box™ Flash Card adapter, label-side up. The Flash Card adapter is a converter that allows standard storage chips to act like Juiceware™ media chips.

Insert the loaded Juice Box™ Flash Card adapter (label-side up) into a Juice Box™ media player.

Turn on the Juice Box™ media player.



The Juice Box™ media player will automatically tag your storage chip with the proper code. First, turn OFF the Juice Box™ media player, then take the storage chip out of the Flash Card adapter, insert it into the card reader and it's ready to use!

Running Juice Box™ software

In order to access all of the features of the Juice Box™ software, a card reader with a properly formatted chip must be connected to your computer.

After properly installing it, you can access the Juice Box™ software by clicking on the Juice Box™ icon on your desktop or by going into the Start Menu and finding the Juice Box™ icon under your Programs menu.

The following features can be found within the Juice Box™ program:



Import

Allows you to import files to enter into either the picture or music library.



Delete

Deletes highlighted files in either the picture library, the music library, or from off the storage chip.



Download

Downloads highlighted files from the music or picture library to a properly formatted SD or MMC storage chip.



Rip CD

Loads in the CoffeeCup® CD & MP3 Ripper (powered by CoffeeCup® software), allowing you to take songs from a CD and drop it into your music library.



Settings

Allows the user to change the default directory for the picture or music libraries.

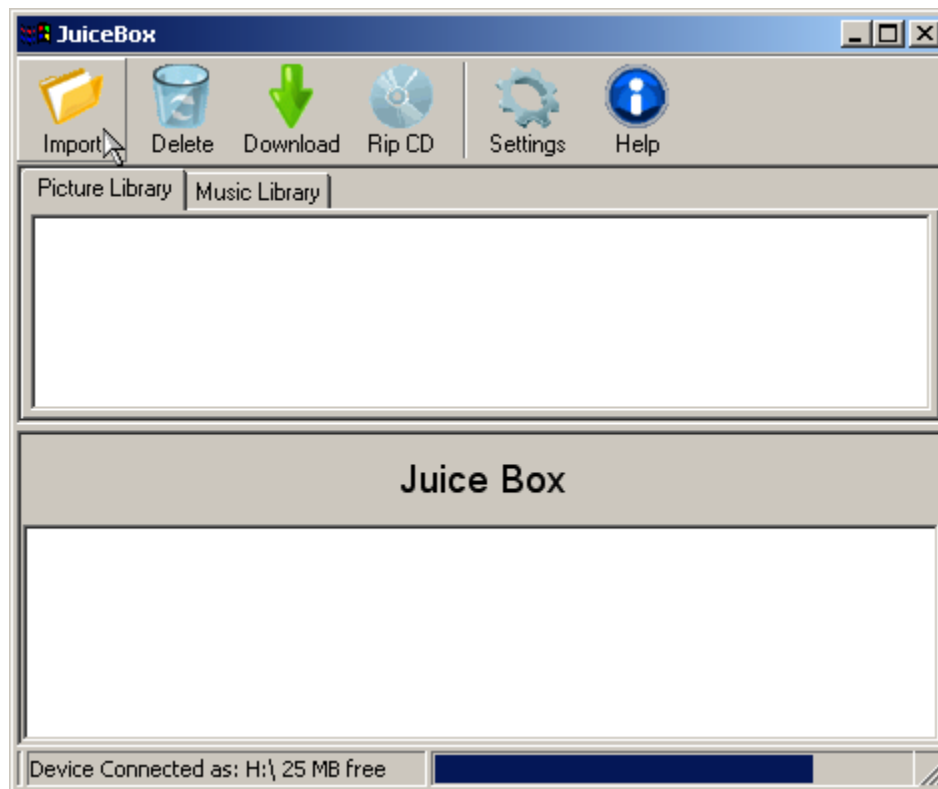


Help

Pulls up the instruction manual.

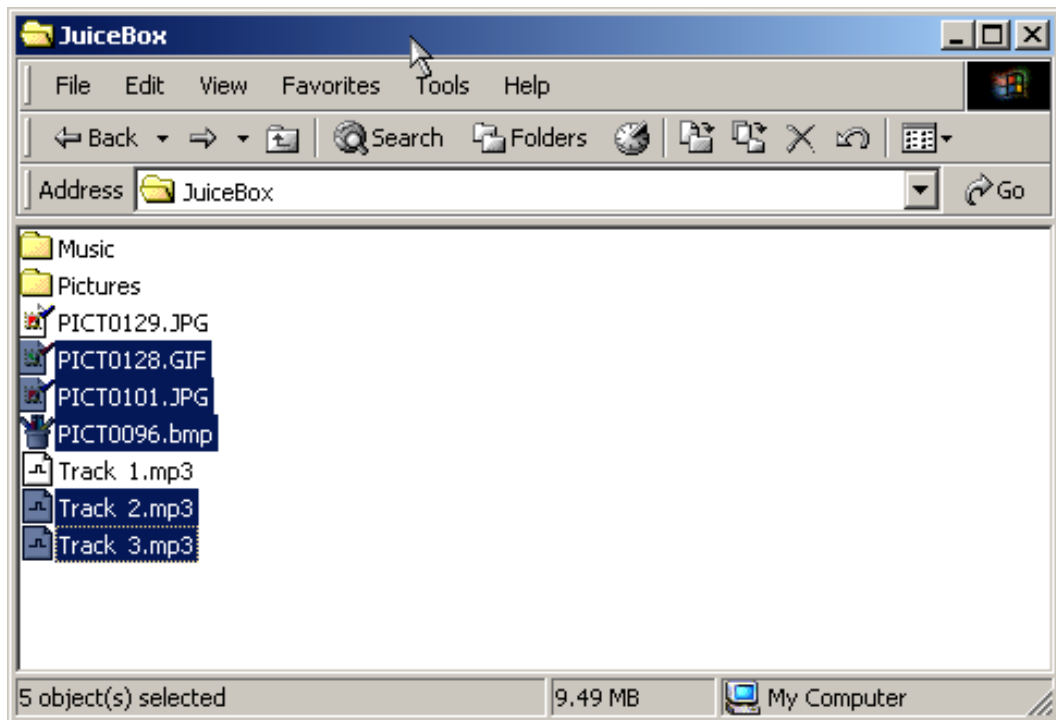
downloading music and pictures

To download files to play on your Juice Box™ media player, first click on the Library tab - either Music or Picture - which you want to use. You can then import files into the chosen Library by clicking the Import button.



The Import button takes you to a default directory (generally, the My Music or My Pictures directory on your desktop computer). You can either select files from that directory or use the taskbar to navigate to another directory.

Highlight the files you want to load and then double-click on them (for a single file) or press Enter to import multiple files. If you are trying to import music and picture files at the same time, the Juice Box™ software will automatically sort them into the appropriate library.



The selected files will then be copied to the Juice Box™ Libraries. Your music can be sorted through its ID3 tag, allowing cataloguing by Name, Artist, or Album. Pictures are simply arranged alphabetically.

You may then download the files to your SD or MMC storage chip simply by highlighting the files in your library and pressing the Download button. You can continue to download files in this manner until the storage chip is filled. The status of the storage chip's memory is presented at the bottom of the screen with a graphical representation showing how much free memory is left.



music detail

The storage chip that comes included with the Juice Box™ MP3 Starter Kit holds 32Mb of storage, approximately a CD's worth of music.

The maximum bitrate playable on the Juice Box™ media player is 128kbps. While songs with higher bitrates may be loaded onto the storage chip, these songs will experience

drop-out and decompression problems when played on the Juice Box™ media player and may stop the player from working altogether without warning.

Picture details

The Juice Box™ software recognizes JPG, BMP, PNG, and GIF picture formats. Pictures downloaded to the storage chip are converted to a .jbp (Juice Box™ Picture) format. The resolution of this format is 240x160.

Double clicking on a picture will preview it in the new format; on some personal computers this may make the picture appear smaller and less sharp. Such issues will be immediately resolved when the picture is shown in its proper format on the Juice Box™ player.

PREVIEWS

You can preview the file you want downloaded by double-clicking on it with the mouse. MP3s will play by accessing whatever MP3 music program you have designated as your default player in Windows® operating system. If you Don't have an MP3 player installed on your PC, you will not be able to preview an MP3. You can download one from www.winamp.com

Pictures will appear in their .jbp format, at a resolution of 240x160. They may also be rotated so that the picture is oriented correctly for display.

Ripping from CDs

Utilizing *CoffeeCup*® software, the Juice Box™ program allows you to 'rip' songs off of a standard CD and download them to a properly formatted SD or MMC chip.



To rip songs, do the following steps:

Insert your CD into the CD-ROM drive.

Left-click the Rip CD button.

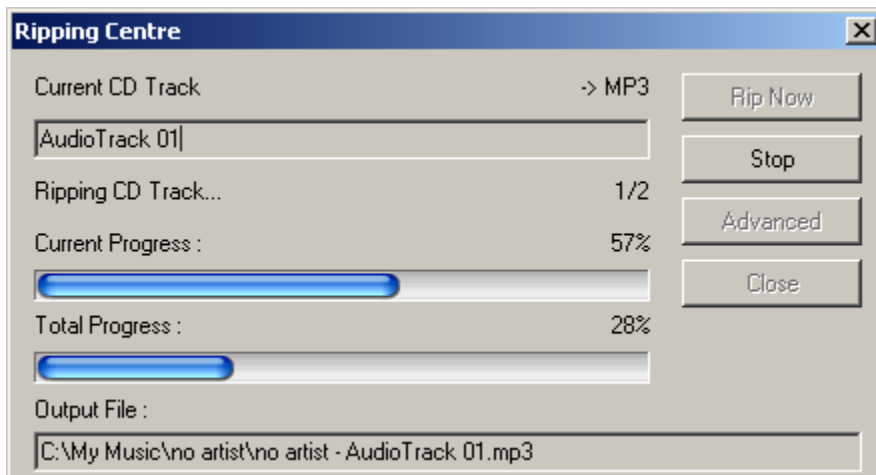
The song information for the CD should list automatically. This software reads the CD information contained in the id3 tags and will reveal it in the track list.

Select the track(s) you want to rip by clicking on the check box to the left of the songs or click the topmost check box to highlight all of the songs.

Click the Make MP3s button to start the ripping process.

Caution: For the program to operate properly, your display font size must be set to 96 dpi or higher. Right click on your desktop and select Properties, select the Settings tab and click on Advanced. You should be able to change the font setting under the General tab.

The program displays each song's progress through the Status bar, which graphically represents how much longer you have until full extraction.

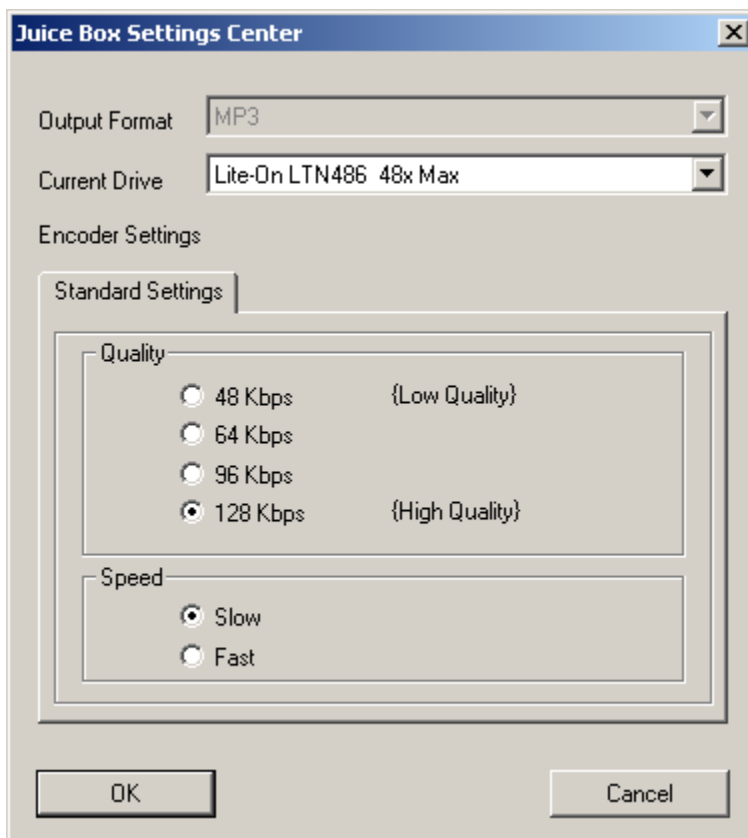


The Ripping Menu also has three other features: Settings, Edit Album, and Burn CDs.

Settings



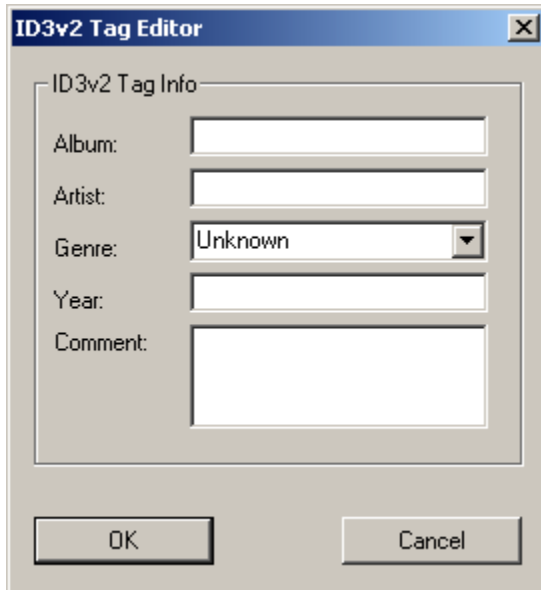
Settings lets you alter the bitrate setting of the music you are trying to record. Please remember that the Juice Box™ player does not support bitrates higher than 128kbps.



Edit Album



Allows you to change the ID3 tags of the songs. This includes information about the album, genre, artist, year, or other miscellaneous comment.



Burn CDs



Selecting the Burn CDs button takes you to the upgrade screen, where you can choose to upgrade this product to the full CD Ripping and Burning Suite created by CoffeeCup® software. An additional fee for the full suite is required.

using your selections with the Juice Box™ player

Once you have downloaded your content to your storage chip, you are now ready to use the chip with the Juice Box™ media player.

Caution: A number of Windows®-based platforms consider SD or MMC chips to be the same as standard hard drives. Before removing a storage chip from the card reader, right-click on the Removable Hardware icon in the System Tray. This will give you the option to

unplug or eject your hardware. Follow its instructions and only when they are completed remove your storage chip from the reader.

Insert your SD or MMC card into the Juice Box™ Flash Card adapter (label-side up), which adapts the card to Juiceware™ media chip format.

Insert the Flash Card adapter (label-side up) snugly into your Juice Box™ media player. When the player is turned on, it allows you to start playing the content on the chip. The playlist will be determined by the storage chip's directory, written when it was ejected, and cannot be changed.

That's it! It's time to enjoy your music on your Juice Box™ player!

Playing your selections with the Juice Box™ player

Always turn your Juice Box™ player OFF before installing or removing the Flash Card Adapter or your SD/MMC storage chip.




Insert the loaded storage chip (label-side up) into the Juice Box™ Flash Card Adapter.

Insert the Juice Box™ Flash Card Adapter (label-side up) into the Juice Box™ player's chip slot.

Turn your Juice Box™ player to the "ON" position.

When using Headphones, first set the volume control to its minimum level and then adjust the volume to a safe level.

MAKING SELECTIONS FROM THE MENUS


- To scroll up, press 
- To scroll down, press 
- Press  to "select" a highlighted option.

START-UP MENU

Select PHOTO VIEWER or MP3 PLAYER



PHOTO VIEWER MENU OPTIONS

MP3 PLAYER

- This option enables you to switch from the Photo Viewer to the MP3 Mode. Simply select (highlight and press ).

PLAY ALL

- Highlight PLAY ALL and press  to start the Looping Slide Show.

> During the Looping Slide Show, press  to pause and then press  again to restart.

>Use  and  to scroll through the individual photos.

>Press  to return to the previous menu screen.

OR

- Highlight PLAY ALL and press  to adjust the duration of each photo in the Looping Slide Show from 1 to 60 seconds.

>Press  to decrease time.


>Press  to increase time.


>Press  to return to the Photo Viewer Mode.

LIST OF INDIVIDUAL PHOTOS

- Use  and  to scroll through the Individual Photos.


- Press  to select and view a photo.

- Press  to return to the previous menu screen.

- Press  during photo viewing to adjust the brightness and contrast.



MP3 MENU OPTIONS

PHOTO VIEWER

- This option enables you to switch from the MP3 to the Photo Viewer. Simply select (highlight and press ).

PLAY ALL

- Highlight PLAY ALL and press  to start playing the music list.

> While your music selection is playing, you can press  to pause the music; select  again to restart.

OR

- Highlight **PLAY ALL** and press **⊗** to bring up an **INFO** screen.
 - > Press **▶** to turn the **AUTO REPEAT ON** or **OFF**.
 - > Press **▶▶** to highlight **ABOUT** and press **▶** to review the **Ownership Information (ABOUT screen)**.
 - > Press **⊗** to return to the previous screen.

PLAY RANDOM

- Press **▶** to start randomly playing the music list.

PLAY LIST & RUN TIME

- Use **◀▶** and **▶▶** to scroll and highlight the **Individual Music Selections** and press **▶** to select.

That's it! It's time to enjoy your music

quickstart

Juice Box™ MP3 and Photo Viewer Quickstart Instructions

Get Ready...

Install the Juice Box™ card reader software on your computer.

Newly formatted SD or MMC storage chips must be put into the Juice Box™ player first. Insert the storage chip into the Juice Box™ Flash Card adapter (label-side up) and then put the Flash Card adapter into the Juice Box™ player (also label-side up).

When the player is turned on, the storage chip will be marked for future use with all Juice Box™ players.

Get Set...

Put a Juice Box™ formatted storage chip into the card reader.

Insert the card reader into the computer's USB slot.

Start the Juice Box™ card reader software.

Go!

Use the Import button to open a music or picture directory on your computer. Highlight the files you want and hit Enter to add them to the Library.

Or click on the Rip CD button to take tracks off of a CD inserted into your computer's CD-ROM. Check the tracks you want and hit Make MP3s to move them to the Library.

Highlight the pictures or music you want to move from the libraries. Click on the Download button to transfer them to the storage chip.

Eject the storage chip and insert it into the Juice Box™ Flash Card adapter (label-side up).

Insert the loaded Juice Box™ Flash Card adapter (label-side up) into the Juice Box™ player and play!

Juice Box™ player FAQ:

Q: Is the headphone jack standard or do I need the Juice Box™ headphones?

A: Any kind may be used.

Q: How much memory does it have?

A: The MP3 Kit comes with 32MB and will take most MMC or SD cards up to and including 512 MB (sold separately and subject to availability).

Q: What kind of batteries does it require?

A: 3 AA batteries are required (sold separately and subject to availability).

Q: Will there be games cartridges in the future?

A: No.

Q: Can I make my own movies/images?

A: No, but with the MP3 kit you can download pics and MP3s.

Q: Will there be a camera attachment?

A: Not in this version.

Q: Can I use other movies?

A: No.

Q: What OS do I need?

A: 98 SE, NT, XP, Windows® 2000. It is not compatible with Windows® 98, it must be 98 SE.

Q: What MP3s can I use?

A: They must be recorded at 128k/sec or less.

Q: Can I download MP3s from the Juiceware™ media chips to my computer?

A: No.

Q: Can I use iTunes?

A: No.

Q: How do I delete/add songs?

A: This info will be covered in instruction manual under “Running Juice Box™ Software”.

Q: Where can I get more memory cards for more music?

A: MMC and SD memory cards are typically available in the Electronics and Camera Departments at your local retailers.

Q: How do I change the play order of the songs?

A: There is no real play list. You can go down the list and select the song you want to listen to.

Q: I lost/scratched/broke my disk, can I order a new one?

A: A new copy of the software can be downloaded at www.juicebox.com.

Q: Can I use a standard USB card reader?

A: Any SD/MMC card reader can be used.

Q: Can I install the software on more than one computer?

A: Yes.

Q: Can I make a backup disk?

A: Yes.

Q: I don't have a USB port. Can I use a USB to serial adaptor or hub?

A: You must have a USB for MP3.

Q: Can I use a USB flash memory card to store more songs or download on the fly?

A: No.

Q: How do I uninstall the software?

A: Double click the uninstall icon in the folder where you installed the Juice Box™ software.

Q: Can I connect two Juice Box™ players together and share music?

A: No, you can't, but you can exchange cards.

Go to www.juicebox.com for more information

© 2004 Mattel, Inc. All Rights Reserved. JUICE BOX is a trademark of Mattel, Inc. Windows is either a registered trademark or a trademark of Microsoft Corporation in the United States and/or other countries.